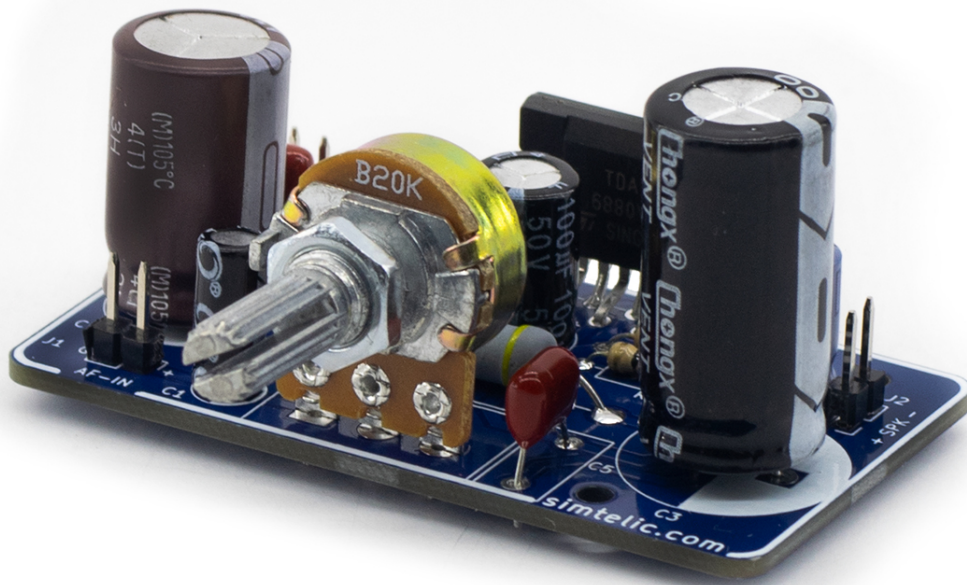


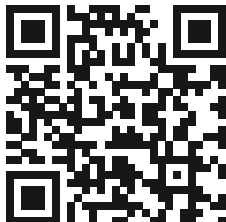
Simtelic



TDA7253 Power Amplifier

Thank you for purchasing this Simtelic DIY Electronic Kit.

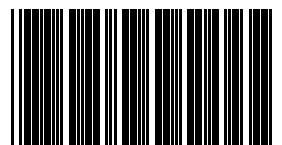
No part of this book shall be reproduced by any means; electronic, photocopying, or otherwise without written permission from the Simtelic (Pvt) Ltd.



Revision: 1.0.0-EN

Copyright © 2024 Simtelic (Pvt) Ltd.

Web Site: <https://simtelic.com>



KT0002

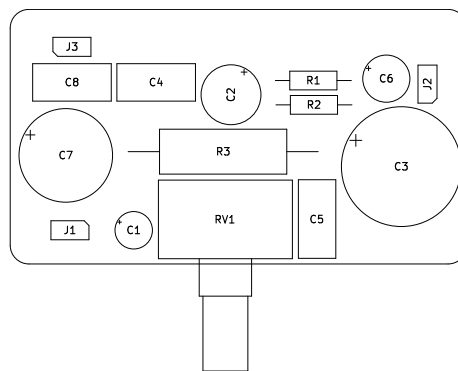
Introduction

This module is a great choice for anyone who is looking for a simple and affordable way to build a high-quality audio amplifier. It builds around a chip that can deliver up to 8 watts of continuous power, which makes it ideal for driving small speakers or headphones.

- **Wide operating voltage range:** Supply voltage range of 10V to 28V allows for use with a variety of power sources, such as batteries, PV power sources, or wall adapters.
- **High efficiency:** Thanks to its efficient Class AB design, it operates with low power consumption, making it suitable for portable applications.
- **High-Quality audio:** Wide frequency response ensures accurate representation of the entire audio spectrum. The low distortion level provides clear and natural sound reproduction.
- **Compact design:** The small and compact module is ideal for space-constrained applications.
- **Applications:**
 - Portable radios
 - MP3 players
 - Speaker systems
 - Intercom systems
 - Computer and AV system

Identify connectors and adjustments

Top Side



J1 - Audio In.

J2 - Speaker Output.

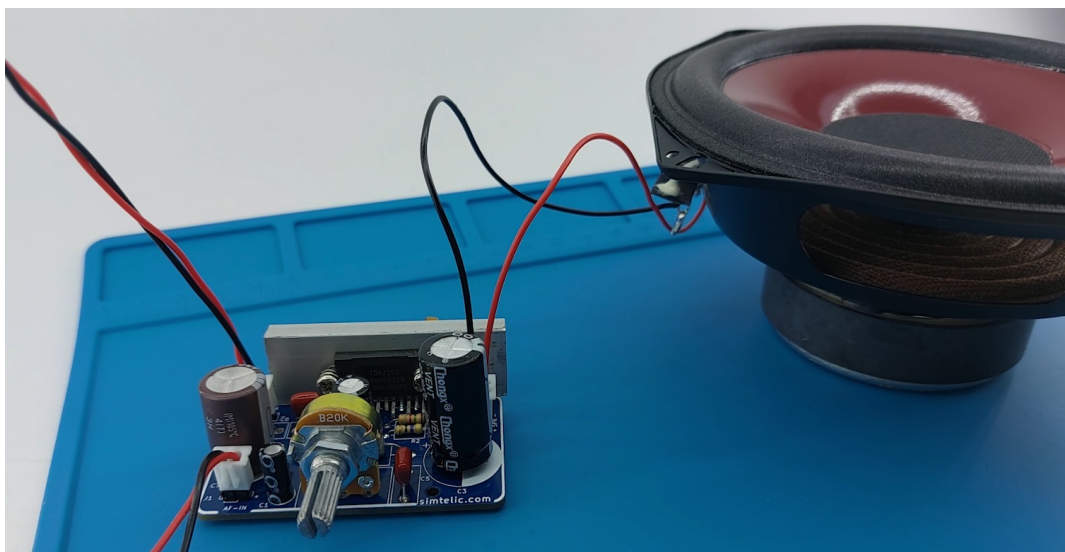
J3 - DC In.

RV1 - Volume controller.

C1	2.2 μ F/50V	(THT)
C2	100 μ F/50V	(THT)
C3	1000 μ F/50V	(THT)
C4, C5, C8.....	0.1 μ F	(THT)
C6	47 μ F/50V	(THT)
C7	470 μ F/50V	(THT)
R1	1.5K Ω	(THT)
R2	47 Ω	(THT)
R3	4.7 Ω /3W	(THT)
RV1	20k Ω (LOG) Potentiometer	
J1, J2, J3.....	1x2-pin, 2.54mm Pin Header	
U1	TDA7253 (ST-CLIPWATT11)	

How to use

1. Connect the full range speaker with J2 pin header
2. Connect mono audio source with J1 pin header
3. Attached the DC power source to J3 pin header (please refer kit specifications)



Suitable heat sink should be attached to the TDA7253

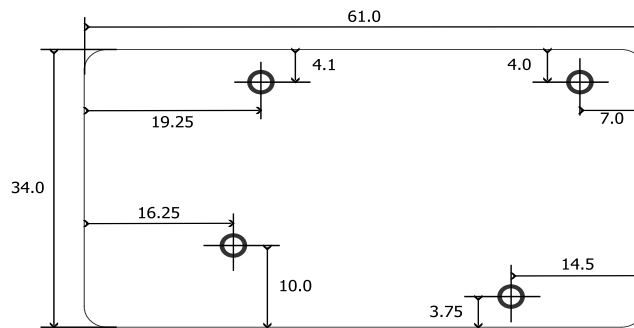
PCB assembly video : <https://youtu.be/AD2REp6pzNM>



Scan for the video

Kit specifications

Power supply.....	DC 10V - 2 8V / 1500mA
Gain.....	Approximately 24 - 35
Total harmonic distortion.....	10% (8W , 8Ω)
Frequency Response.....	40Hz - 70kHz
Audio output power.....	Maximum 8W (8Ω)
Dimensions.....	61.5 × 34.0mm



**Simtelic (Pvt) Ltd cannot be held responsible in the event of damage or injury resulting from
(incorrect) use of this electronic kit.**

The continuous improvement of its products is the policy of Simtelic (Pvt) Ltd who reserve the right to
improve design without notice.

Simtelic (Pvt) Ltd.

Phone: +094 76 831 5048

Web Site: simtelic.com

E-mail: info@simtelic.com

